

Features:

1. Suitable for airbrush Dia 0.2~0.5mm.
2. especially perfect for make up cosmetic, nail art, airbrush tattoo, airbrush hobby and so on;
3. It can start with pressure, and continuous work;
4. Has auto start and auto stop function.
5. Electronic adjust pressure, LED light show different pressure gear, to meet with different needs.
6. One button operation, easy to use.
7. Airbrush holder can be free installation,demolition, which is flexible and applied.
8. Fully function, beautiful shape fashion ,lug around easily.

Specification:

Air compressor: MOTOR: DC 12V AMP: 1.6A Air flow: 10.5L/min Working pressure: 2~15psi Auto stop: 21psi Auto start: 15psi	AC transformer: Input AC100~240V50/60HZ 0.6A Output DC 12V 1.6A
--	---

Operation Direction:

1. When in AC air compressor working situation, please put AC transformer plug into compressor power jack, and connect with AC power at the same time.
2. Press the white power on/off switch, the compressor start working. Then press the same button for a short second continuously, it will cause the working pressure change, with the green working light changes, the so called working pressure adjustable. And please turn off the compressor when stop use (By pressing the white switch for three second).
3. There is an electric shock hazard if connect the power plug in a wrong way.
4. The compressor has internal hot protection device, the compressor will auto cut off the power when over heat, and reset after the motor cool down.
5. Put the airbrush back to the airbrush holder, to prevent the airbrush drop or the ink dump out.
6. PLS use the airbrush compressor in a right way, don't touch the machine by wet hands.
7. After using, PLS clean the airbrush.and pull up the AC adapter immediately, put it in a dry place.
8. Automatics unable to keep pressure for long time, in order to extend the service life , PLS turn off the compressor when stop working

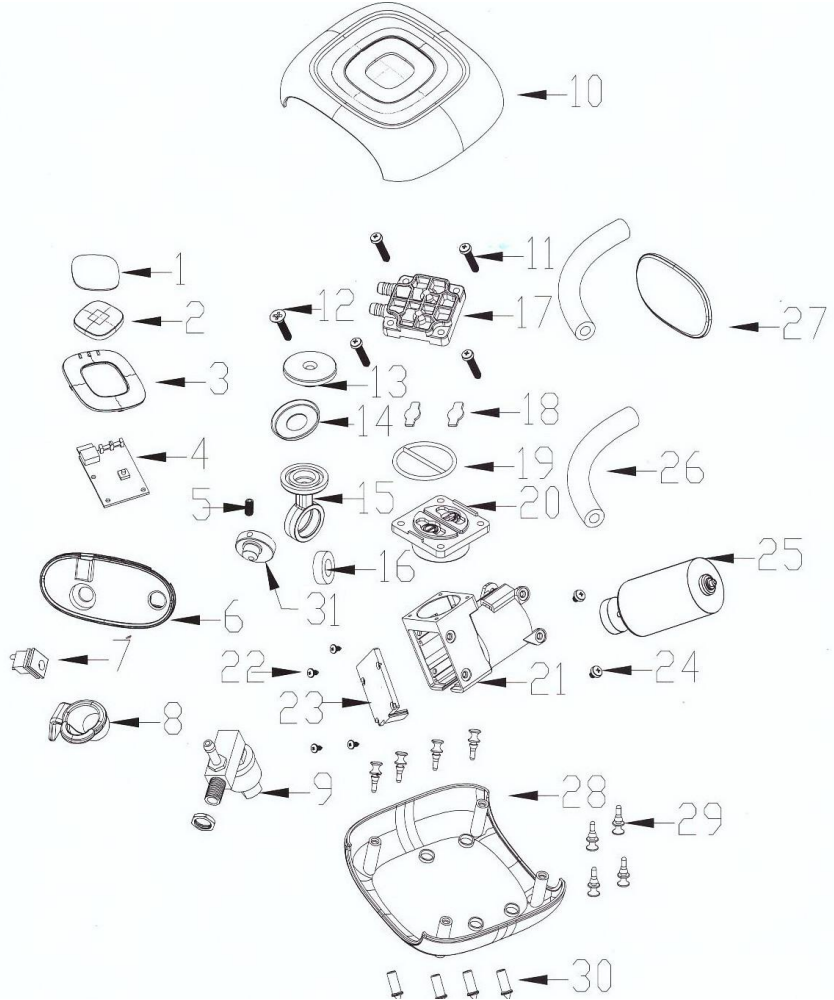
Safety Requirement for User:

1. To prevent health damage, never use at high temperature, wet location!
2. The product must used in dry, indoor locations. Do not spray noxious, flammable, explosive material.
3. PLS operate the machine as manual, Improper use will damage to equipment or harm consumers.
4. If there is something unusual happens, please disconnect the device and power supply immediately.
5. If any accessory is damaged, please take it to wholesaler or professional repair shop, do not try to repair by oneself.
6. Please keep the product in clean, dry and do not expose the product or its accessories in the sun or to the temperatures high than 35°C.
7. The product is not a toy and must be kept out of the reach of children. There is an electric shock hazard if connect the power plug in a wrong way

Description:



Spare Part List:



PARTS. NO.	DESCRIPTION	QTY	PARTS. NO.	DESCRIPTION	QTY
#01	ON/OFF POWER AND PRESSURE SWITCH BUTTON	1	#17	CYLINDER HEAD	1
#02	BUTTON CUSHION	1	#18	VALVE	1
#03	PLASTIC FASTENER	1	#19	ORING	1
#04	CIRCUIT BOARD	1	#20	CYLINDER BLOCK	1
#05	M4*8 SCREW *1	1	#21	CYLINDER BRACKET BOX	1
#06	AIR OUTLET DAMPER	1	#22	M3*5 SCREW	4
#07	WIRE SOCKET	1	#23	COVER BOARD	1
#08	AIRBRUSH HOLDER BOX	1	#24	M3*5 SCREW	2
#09	PRESSURE SWITCH ASSEMBLY	1	#25	MOTOR	1
#10	FRONT COVER	1	#26	HOSE	2
#11	M3*20 SCREW	4	#27	SIDE PLATE	1
#12	M3*20 SCREW	1	#28	BACK COVER	1
#13	PRESS PLATE	1	#29	VIBRATION ATTENUATION FEET	8
#14	COMPRESSOR RING	1	#30	RUBBER FEET	4
#15	CONNECTING ROD	1	#31	COUNTER WEIGHT	1
#16	689 BEARING	1			

(Note: Pictures for reference, PLS make the object as standard.)

